

## FLEX SERVICE

Flex Service is travel on your time and in your neighborhood. **Created to provide riders with on-the-spot service, you can use it in 2 ways:**

- 1. Board at a Scheduled Flex Stop**
- 2. Reserve Your Ride**

### First Time Using Flex?

We're here to help. Call us at **1-877-906-3539** or **401-784-9500, EXT. 1220**. Or, for deaf or HOH consumers, call **401-222-5300**.

#### Flex Office Hours:

8:30 AM–4:30 PM, Monday–Friday

### Reserved Rides

Call us to reserve a ride. See information panel for phone numbers.

We will pick you up and drop you off anywhere within 3/4 of a mile of a regularly scheduled Flex Stop.

#### Remember:

- You **MUST** call **24-hours in advance** to reserve a ride for pick-ups and drop-offs.
- Reservations are **LIMITED** and accepted on a first come, first served basis.
- Flex Drivers **CANNOT** accept reservations.

### Scheduled Flex Stops

Find one of our designated Flex Stops and hop on!

If you cannot reach a regularly scheduled Flex Stop, but are within 3/4 of a mile of one, please call us at the number above to arrange a reserved ride.

#### Remember:

- Once on board, you can request any destination within 3/4 of a mile of a regularly scheduled stop (see map for details).
- You can board at a Scheduled Stop without a reservation, but if you want to be picked up from where you were dropped off you **MUST have made a reservation**.

### Headed Outside Your Flex Zone?

At the locations listed below, riders can transfer to the 204 Westerly Flex:

- WESTERLY TRAIN STATION
- WESTERLY WALMART
- STEDMAN CENTER
- SALT POND PLAZA



### RIPTA Cash Fares\*

**Single Trip from a Time Point**  
Un Viaje desde un Punto de Tiempo..... \$2.00

**Single Trip, Custom Reservation**  
Un Viaje, Reserva Personalizada..... \$4.00

Children under 5 ride free when accompanied by an adult.  
Children under 12 years old must be accompanied by an adult.



### RIPTA Wave Fares

Available as either a smart card or within the RIPTA app, WAVE is the contactless, convenient way to ride.

**Full Fare • Tarifa Básica**  
(1 hour of unlimited rides)..... \$2.00

**Day Pass • Pase de día**..... \$6.00

**Monthly Pass • Pase Mensual**..... \$70.00

Visit [RIPTA.com/wave](http://RIPTA.com/wave) for more information.

RIPTA offers a **Reduced Fare Bus Pass Program** for Seniors, People with Disabilities, and Medicare Card Holders. Please visit [www.RIPTA.com](http://www.RIPTA.com) for details.

RIPTA ofrece un **Pase de Tarifa Reducida** a los Adultos Mayores, Personas con Discapacidades y cualquier persona con una una Tarjeta de Identificación de Medicare. Para más información, visite [www.RIPTA.com](http://www.RIPTA.com).

\* Subject to Change

## 301 FRIDAY FLYER

### FRIDAYS ONLY!

Regularly scheduled stops at 11 convenient locations:

- 1 Westerly Train Station
- 2 Downtown Westerly
- 3 Westerly Senior Center
- 4 Franklin/Aldi's Grocery
- 5 Walmart (Dunn's Corners)
- 6 Village/Main (Bradford)
- 7 Main/Champlin (Ashaway)
- 8 Saugatucket Springs (Hopkinton)
- 9 Wood River Health
- 10 Main/Spring (Hope Valley)
- 11 Stilson Road/Stop & Shop

### Frequency

Westerly to Hope Valley: Two trips

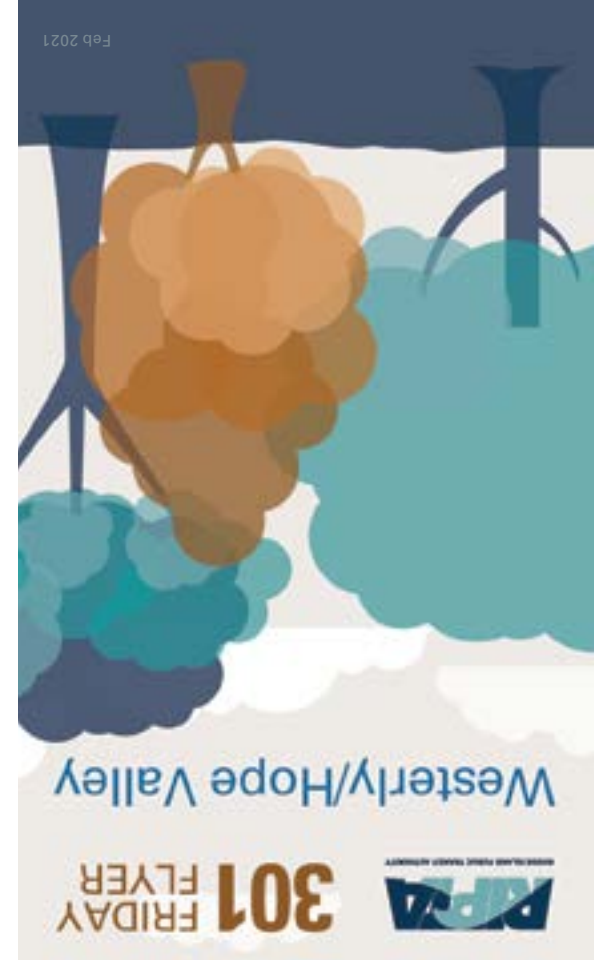
Hope Valley to Westerly: One trip

No service on holidays

### Holidays

The 204 and 301 Flex will not operate on the following holidays:

- New Year's Day
- Dr. Martin Luther King Jr. Day
- Memorial Day
- Independence Day
- Victory Day
- Labor Day
- Columbus Day
- Veterans Day
- Thanksgiving Day
- Christmas Day



## INFORMATION

### FLEX HOURS OF OPERATION

**FRIDAYS ONLY** 9:00am-1:47pm

NO SERVICE on Mon-Thurs, Weekends & Holidays

Custom drop-off upon request

Custom pick-up with advance reservation



**Like Us on Facebook**  
[facebook.com/RideRIPTA](https://facebook.com/RideRIPTA)



**Follow Us on Twitter**  
[Twitter.com/RIPTA\\_RI](https://Twitter.com/RIPTA_RI)



**CustomerRelations@RIPTA.com**



**RIPTA.com**



**1-877-906-Flex (3539)**  
**401-784-9500, ext. 1220**



**401-222-5300 (Deaf/HOH consumers)**



**WAVE**



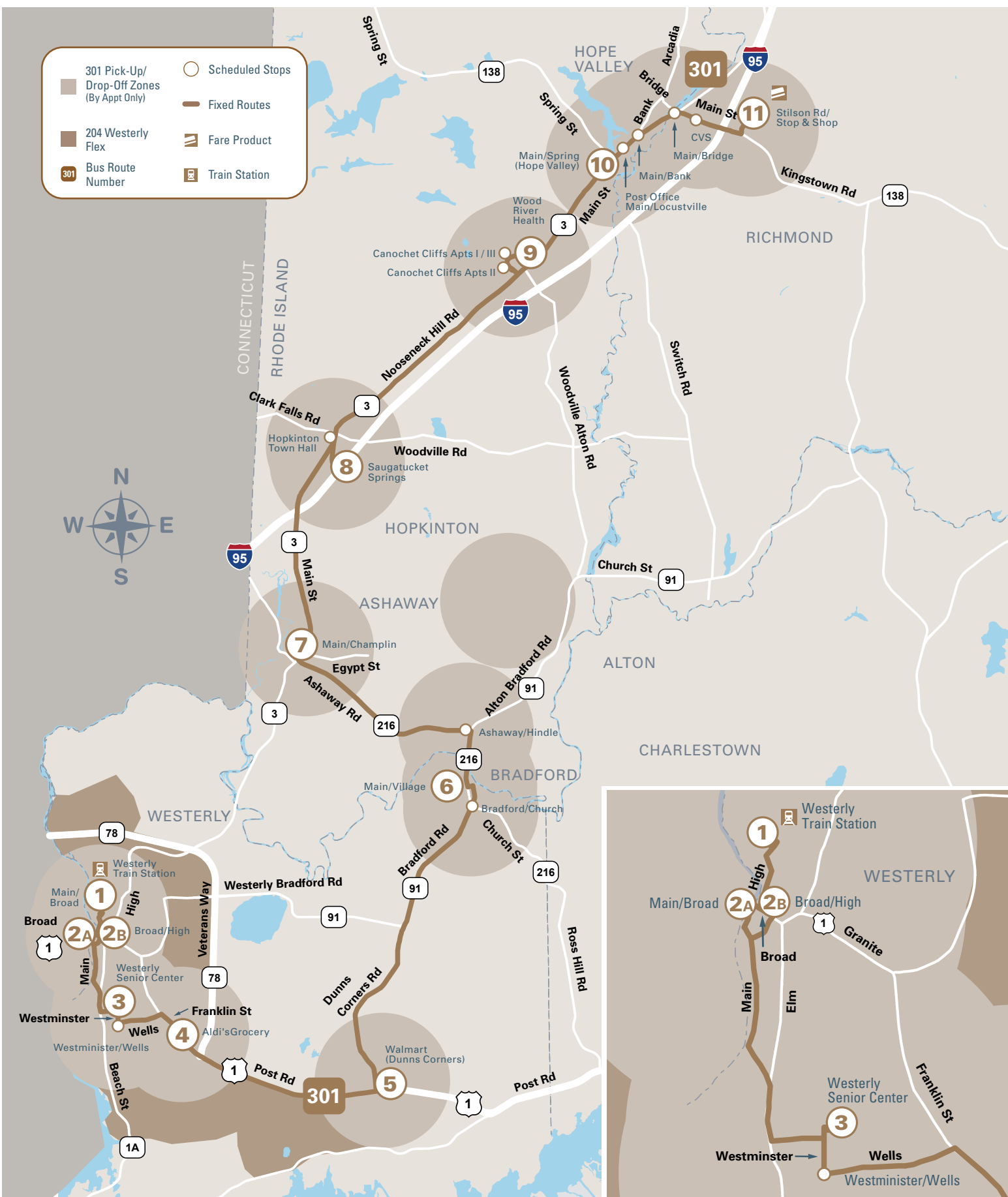
RIPTA is fully compliant with the requirements of the Americans with Disabilities Act (ADA)

301 Pick-Up/ Drop-Off Zones (By Appt Only)
  Scheduled Stops

204 Westerly Flex
  Fixed Routes

Bus Route Number
  Fare Product

301
  Train Station



### FRIDAY-ONLY to Richmond

	1	2A	3	4
Timepoint Stops	Westerly Train Station	Main/Broad (Westerly)	Westerly Senior Center	Franklin/Aldi's Grocery
Transfer	204 FLEX			
AM	9:00	9:02	9:06	9:12
PM	12:48	12:50	12:54	1:00

	5	6	7	8
Timepoint Stops	Walmart (Dunn's Corners)	Village/Main (Bradford)	Main/Champlin (Ashaway)	Saugatucket Springs (Hopkinton)
Transfer	204 FLEX			
AM	9:20	9:31	9:37	9:45
PM	1:08	1:19	1:25	1:33

	9	10	11
Timepoint Stops	Wood River Health	Main/Spring (Hope Valley)	Stilson Rd/ Stop & Shop
Transfer			
AM	9:59	10:03	10:18
PM	1:47	-	-

### FRIDAY-ONLY to Westerly

	11	10	9
Timepoint Stops	Stilson Rd/ Stop & Shop	Main/Spring (Hope Valley)	Wood River Health
Transfer			
AM	11:15	11:20	11:26
PM	-	-	-

	8	7	6	5
Timepoint Stops	Saugatucket Springs (Hopkinton)	Main/Champlin (Ashaway)	Village/Main (Bradford)	Walmart (Dunn's Corners)
Transfer				204 FLEX
AM	11:38	11:44	11:55	-
PM	-	-	-	12:08

	4	3	2B	1
Timepoint Stops	Franklin/Aldi's Grocery	Westerly Senior Center	High/Broad (Westerly)	Westerly Train Station
Transfer				204 FLEX
AM	-	-	-	-
PM	12:14	12:20	12:24	12:34