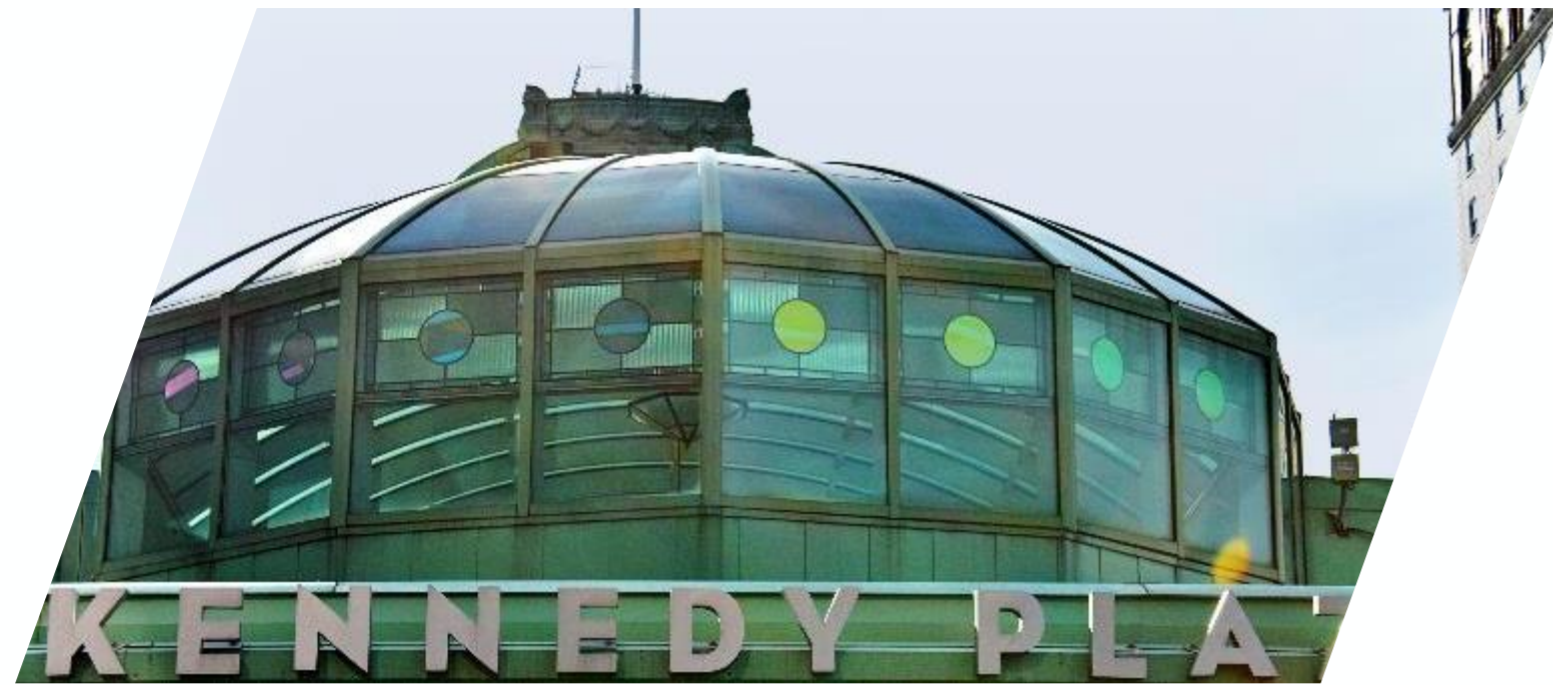


A detailed LEGO city model serves as the background. It features a multi-story yellow building with a 'WHOLE FOODS MARKET' sign, a grey train with blue windows, a tall grey tower, and various green trees and colorful traffic cones.

RHODE ISLAND PUBLIC TRANSIT AUTHORITY

JANUARY 2023

**MONTHLY FINANCIAL AND OPERATIONAL REPORT
BOARD OF DIRECTORS MEETING**



RIPTA RECAP



REAL-TIME INFORMATION SCREENS

Defunct screens have been removed.



KENNEDY PLAZA RESTROOM CLOSURES

RIPTA maintenance staff works diligently to keep the restrooms operational when the building is open. Restrooms are only closed for necessary maintenance.



KENNEDY PLAZA SCHEDULE RACK

Schedule rack has been installed.



PHOTO ID OFFICE

Photo ID Office will reopen this month.



ROSA PARKS BUS SHELTER

RIPTA is moving forward with this project.

RHODE TO RIPTA

Action Plan for Electrification
and Service Growth

Providence Transition Academy's
Annual Transition Fair

Winterfest Toy Drive

Junior Achievement RI
Career Exploration Fair

Providence in LEGOS



snapshot:

*1,000+ toys collected
for Hasbro Children's
Hospital*

5,000+ LEGOs



IN THE NEWS

REED STEERS OVER \$450 MILLION IN TRANSPORTATION FUNDS TO RI

This includes \$33.3 in THUD earmarks for roads, bridges, pedestrian & transit projects.

Newport Buzz and What's Up Newp.

EC4 ACCEPTS DRAFT CLIMATE REPORT

The state's climate change panel accepted a draft report outlining the progress it's made and the progress it will need to continue to make in reducing greenhouse gas emissions to curb climate change.

ABC 6, Providence Journal, Boston Globe, and ecoRI News

NEW FOSTER PARK-N-RIDE SERVICE

RIPTA had scheduled a public hearing regarding the possible extension of its bus line to serve a new park-n-ride in Foster located at St. Paul the Apostle Church.

The Valley Breeze.

NORTH MAIN STREET REIMAGINED WITH LEGOS

Rhode Island Lego artist Andy Grover created the display based on a study by the city's Department of Planning and Development focused on making improvements along North Main.

WJAR and WPRI.

PAWTUCKET-CENTRAL FALLS TRANSIT CENTER TO OPEN JANUARY 23, 2023


Opening date officially announced.

WPRI, Providence Business News, The Valley Breeze, and RINewsToday.com

ADVOCATES CALL FOR RIPTA EMPLOYEES TO CARRY NARCAN

Advocates are calling for harm reduction measures to be implemented at Kennedy Plaza.

WJAR and Providence Journal.



I was riding Bus 57 from Centerdale when an elderly woman approached the bus driver. The elderly woman was clearly lost and very confused. The bus driver handled the situation beautifully. She was patient when asking her questions and making sure that the elderly woman got home safely. I cannot stress enough how well the bus driver handled this.

- J. ELACIO

Employee SPOTLIGHT

James Canty

Executive Director of Project Management

James Canty is a certified Project Management Professional (PMP) who has been involved in project work for his entire career, starting as an engineer developing process control systems for fossil-fuel power plants. This work led to the management of large engineering projects to retrofit the controls, safety systems and control rooms of several nuclear plants.

As nuclear work in the U.S. slowed, James joined RIPTA in 2020 and has built the Project Management department from the ground up. With the hiring of 3 additional Project Managers, James and his team are running 17 capital projects for the Authority. This work includes building the infrastructure for battery-electric bus charging, rehabbing the more than 100-year-old bus tunnel between North Main and Thayer Streets in Providence, and building a gasoline fueling station at RIPTA's Elmwood campus.

James and the Project Management Team are most excited about work on new passenger facilities including the proposed Dorrance Street Transit Center, the expansion at the CCRI Knight Campus in Warwick and a new building being scoped for the Pawtucket-Central Falls Transit Center.

James' approach to Project Management is very structured, beginning with extensive planning and analysis, strict schedule and budget control, extensive risk identification and management, and most importantly consistent stakeholder communication.

James has a Bachelor of Science Degree in Mechanical Engineering from Northeastern University, a Master's Degree in Quality Management from Anna Maria College and a Master's Degree in Engineering Management from Tufts University.

Although searching for a house in Rhode Island, James is living in Massachusetts with his wife of 37 years. Together they raised 2 daughters who are engineers in the defense industry. When not working, James and his wife can be found at the beach, either walking or reading a book under an umbrella.



Budget to Actual - December 2022

Budget-Actual FY 2023	Monthly Current Year			
	Budget	Actual	VAR \$	VAR %
Federal Subsidies	\$2,856,032	\$4,912,643	\$2,056,611	72.0%
Federal Subsidies-CARES Act	\$2,520,103	\$4,484,851	\$1,964,748	78.0%
State Subsidies	\$3,769,903	\$4,866,919	\$1,097,015	29.1%
Other Revenue	\$596,602	\$5,260,034	\$4,663,433	781.7%
Passenger Fares	\$869,437	\$679,724	(\$189,712)	-21.8%
Third Party Fares	\$1,245,032	\$933,890	(\$311,142)	-25.0%
Special Project Revenue	\$121,782	\$64,273	(\$57,509)	0.0%
Total Revenue	\$11,978,891	\$21,202,335	\$9,223,443	77.0%
	Budget	Actual	VAR \$	VAR %
Salaries & Fringe Benefits	\$9,718,474	\$13,018,739	(\$3,300,266)	-34.0%
Contract Services	\$927,438	\$879,144	\$48,294	5.2%
Operating Expense	\$2,074,137	\$2,205,835	(\$131,698)	-6.3%
Utilities	\$216,122	\$299,256	(\$83,133)	-38.5%
Capital Match & Repayment	\$52,539	\$3,642,119	(\$3,589,580)	-6832.2%
Debt Service	\$0	\$0	\$0	0.0%
Special Projects	\$41,667	\$0	\$41,667	0.0%
Total Expenses	\$13,030,377	\$20,045,093	(\$7,014,716)	-53.8%
	(\$1,051,486)	\$1,157,242	\$2,208,727	

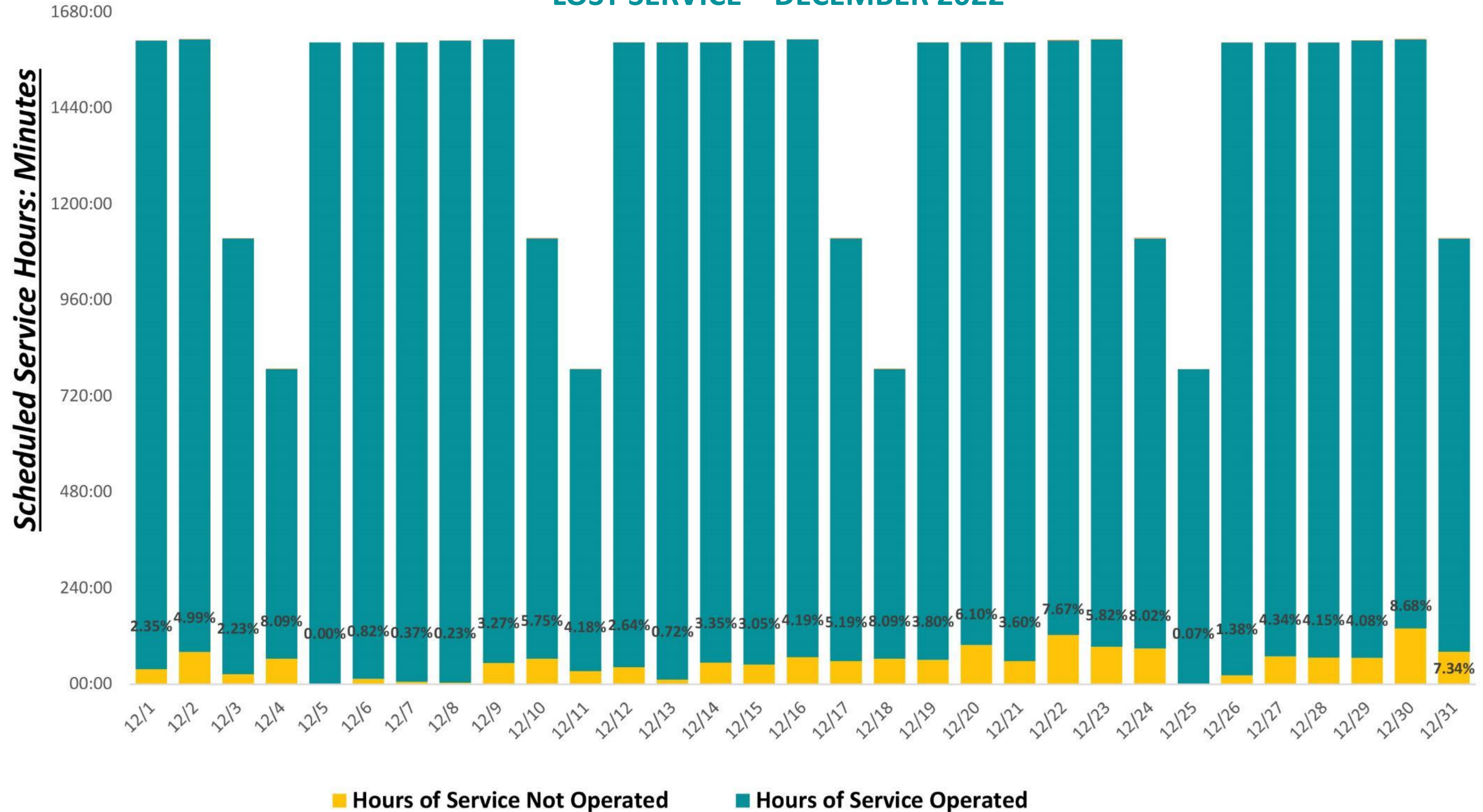
- Large amounts of federal funds and relief funds were utilized in December now that the contract with ATU 618 has been ratified.
- Passenger revenue continues to lag projections.
- Costs were also higher than expected with retro pay and covid service bonuses being paid in December.
- Capital match is higher than expected due to an incorrect posting to an operating expense account. This will be corrected for February.

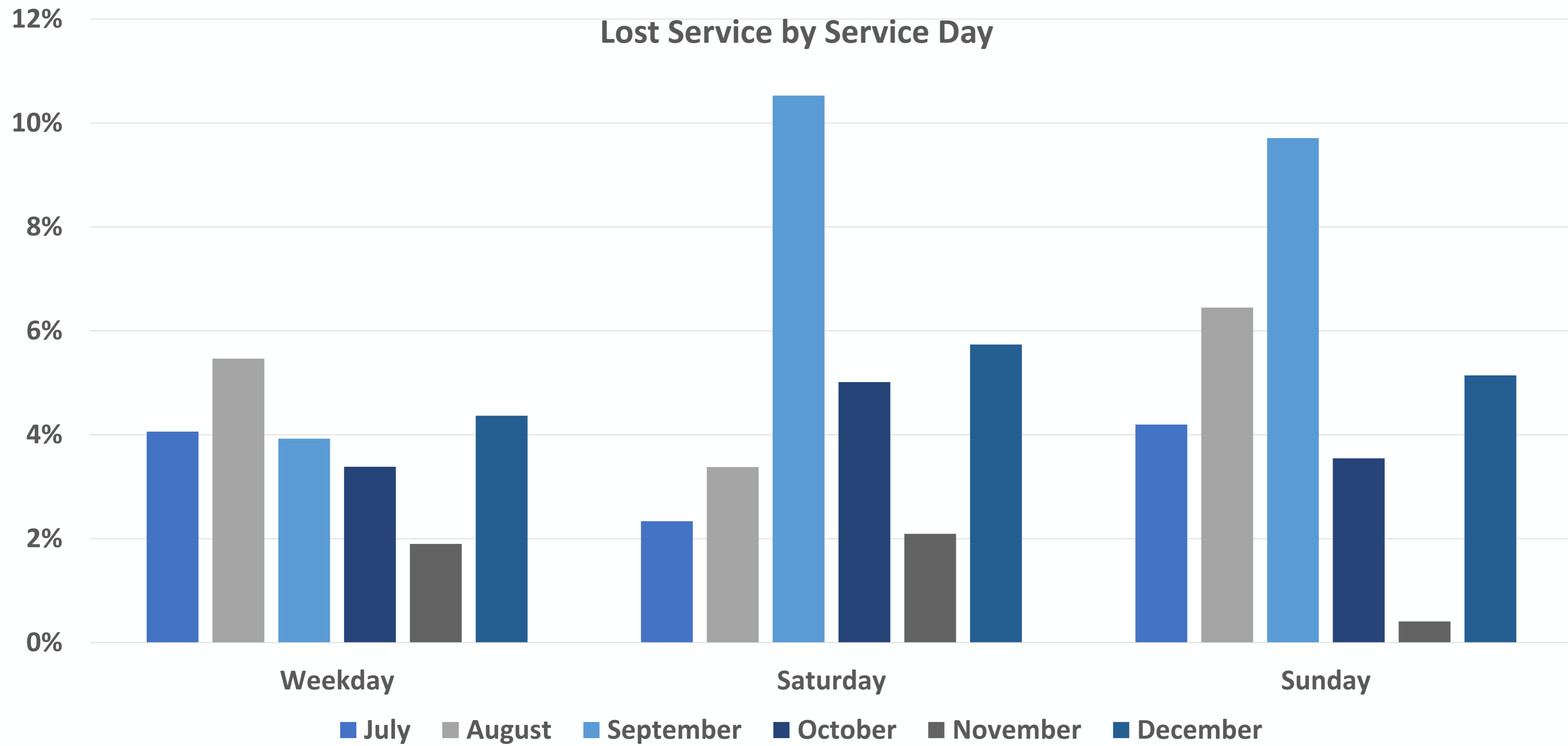
Budget to Actual through December 30, 2022

Budget-Actual FY 2023	Year To Date Current Year			
	Budget	Actual	VAR \$	VAR %
Federal Subsidies	\$17,136,191	\$16,729,258	(\$406,933)	-2.4%
Federal Subsidies-CARES Act	\$15,120,620	\$11,269,702	(\$3,850,918)	-25.5%
State Subsidies	\$26,479,973	\$25,050,065	(\$1,429,908)	-5.4%
Other Revenue	\$3,584,010	\$9,087,018	\$5,503,008	153.5%
Passenger Fares	\$5,831,828	\$4,777,137	(\$1,054,691)	-18.1%
Third Party Fares	\$5,719,496	\$5,029,160	(\$690,336)	-12.1%
Special Project Revenue	\$730,693	\$380,354	(\$350,338)	0.0%
Total Revenue	\$74,602,810	\$72,322,693	(\$2,280,116)	-3.1%
	Budget	Actual	VAR \$	VAR %
Salaries & Fringe Benefits	\$52,446,209	\$49,392,589	\$3,053,620	5.8%
Contract Services	\$5,564,630	\$3,213,914	\$2,350,716	42.2%
Operating Expense	\$12,873,597	\$11,025,097	\$1,848,500	14.4%
Utilities	\$649,572	\$816,683	(\$167,112)	-25.7%
Capital Match & Repayment	\$315,234	\$4,295,586	(\$3,980,352)	-1262.7%
Debt Service	\$0	\$0	\$0	0.0%
Special Projects	\$250,000	\$8,962	\$241,038	0.0%
Total Expenses	\$72,099,242	\$68,752,832	\$3,346,410	4.6%
	\$2,503,568	\$3,569,861	\$1,066,294	

- Usage of federal funds (including relief) are below projections, largely reflecting less than expected costs
- Passenger fares are nearly \$1.8M worse than expected thus far, largely due to the R-line free fare pilot. RIPTA expects its first reimbursement for lost revenue in late January
- Personnel, contract, and operating costs all are under budget
- Capital match and repayment will be corrected for the February board meeting.

LOST SERVICE – DECEMBER 2022





MONTHLY RIDERSHIP

December 2022 System-wide Ridership: 881,039

December 2021 System-wide Ridership: 801,518

December 2020 System-wide Ridership: 558,692

December 2019 System-wide Ridership: 1,238,047



DEC. MONTHLY RIDERSHIP	2022	2021	2020	2019
System-wide	881,039	801,518	558,692	1,238,047
Fixed-Route	852,585	777,275	542,394	1,201,790
Flex	5,373	4,372	3,270	5,357
Ride Paratransit	23,081	19,871	13,028	30,900

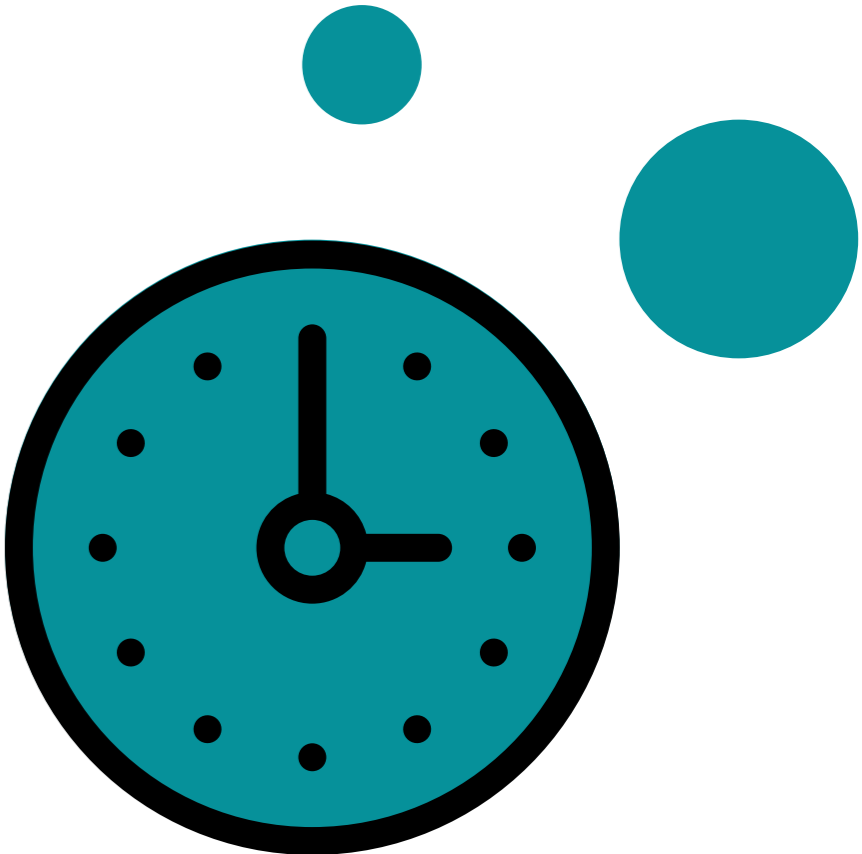
RIDERSHIP INCREASED 9.9% IN DECEMBER 2022 FROM DECEMBER 2021.

*Fixed-Route and Flex ridership counts come from the Genfare farebox, Wave smart card, and Wave mobile app.
Ride Paratransit ridership counts come from Reveal tablets for Ride, and 3rd party reports for Taxi trips.*

ON TIME PERFORMANCE (OTP): FIXED-ROUTE

	2022	2021	2020	2019
DECEMBER	80.2%	80.9%	81.1%	79.5%
NOVEMBER	79.2%	79.3%	81.5%	78.7%
OCTOBER	78.3%	78.6%	81.4%	77.9%
SEPTEMBER	78.1%	79.1%	81.2%	76.0%
AUGUST	81.3%	81.5%	80.5%	80.4%
JULY	81.0%	81.8%	80.4%	80.9%
JUNE	80.2%	80.9%	78.4%	78.0%
MAY	81.1%	81.6%	76.5%	78.6%
APRIL	81.7%	83.2%	75.2%	80.8%
MARCH	82.2%	84.2%	78.8%	81.0%
FEBRUARY	81.3%	84.1%	82.4%	81.5%
JANUARY	82.2%	83.0%	82.3%	82.4%

OTP DECREASED BY 0.87% IN DECEMBER 2022 FROM DECEMBER 2021

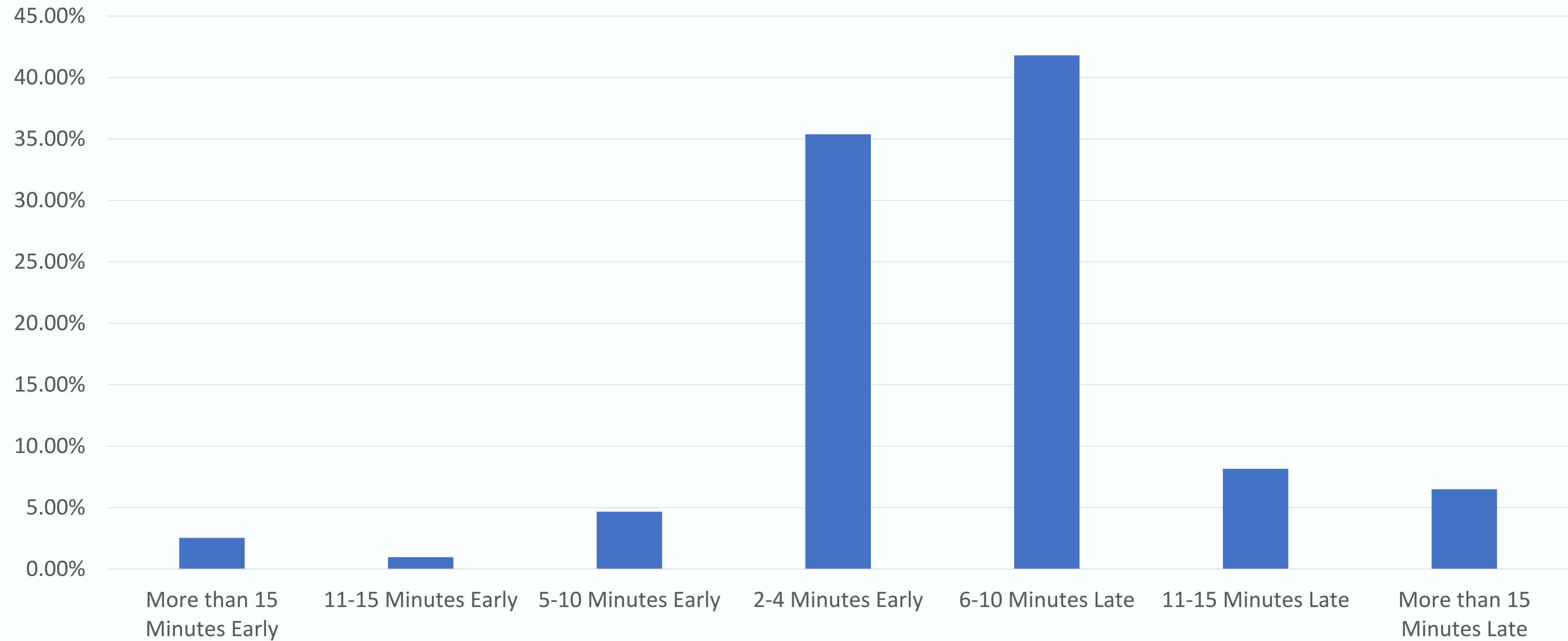


On Time Performance

On Time Performance (OTP) is based on Departure Time. On Time is between 1 minute early and 5 minutes late.

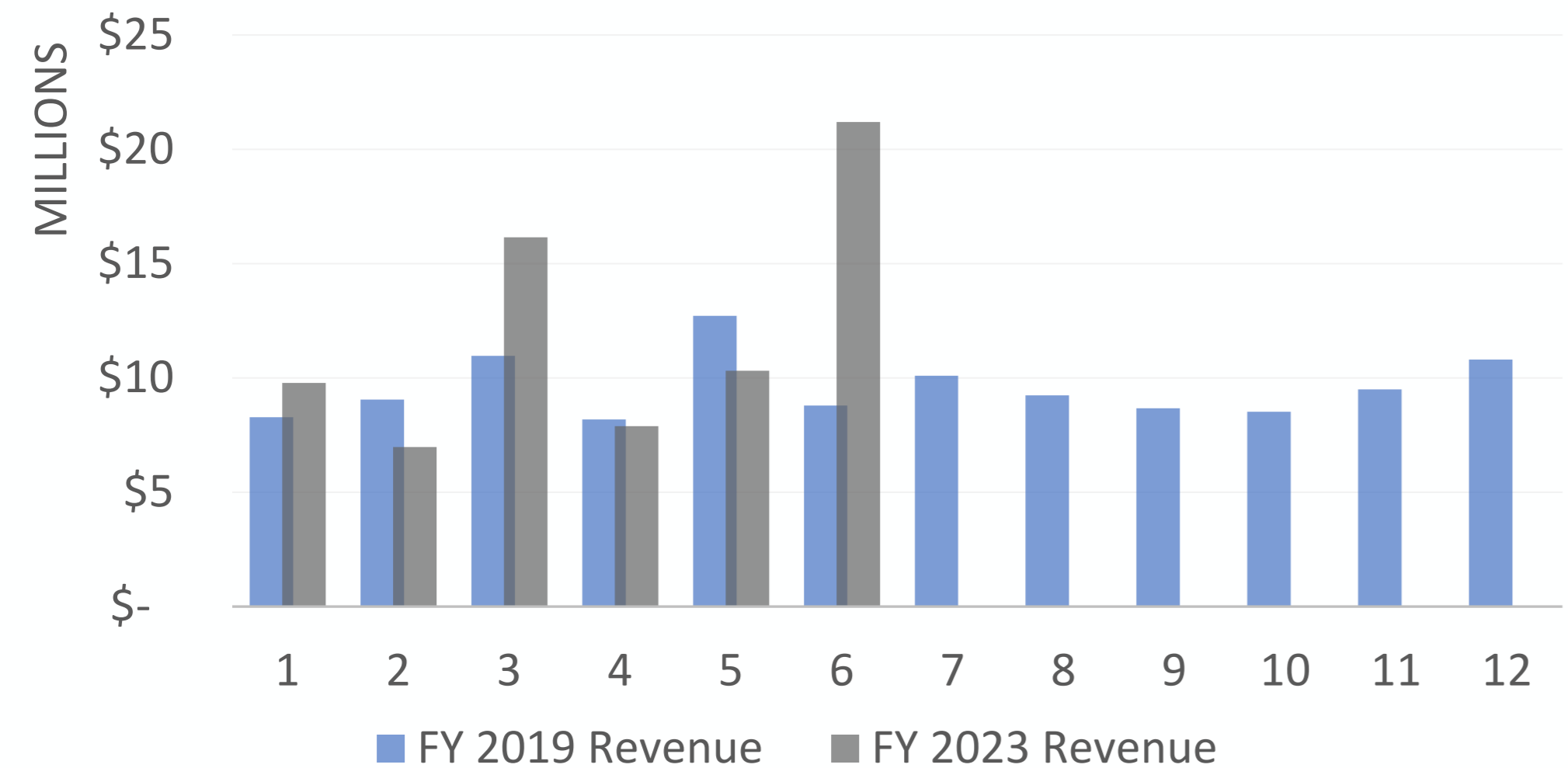
ABBG AVERAGE: 79%

Dispersion of On-Time Performance - December

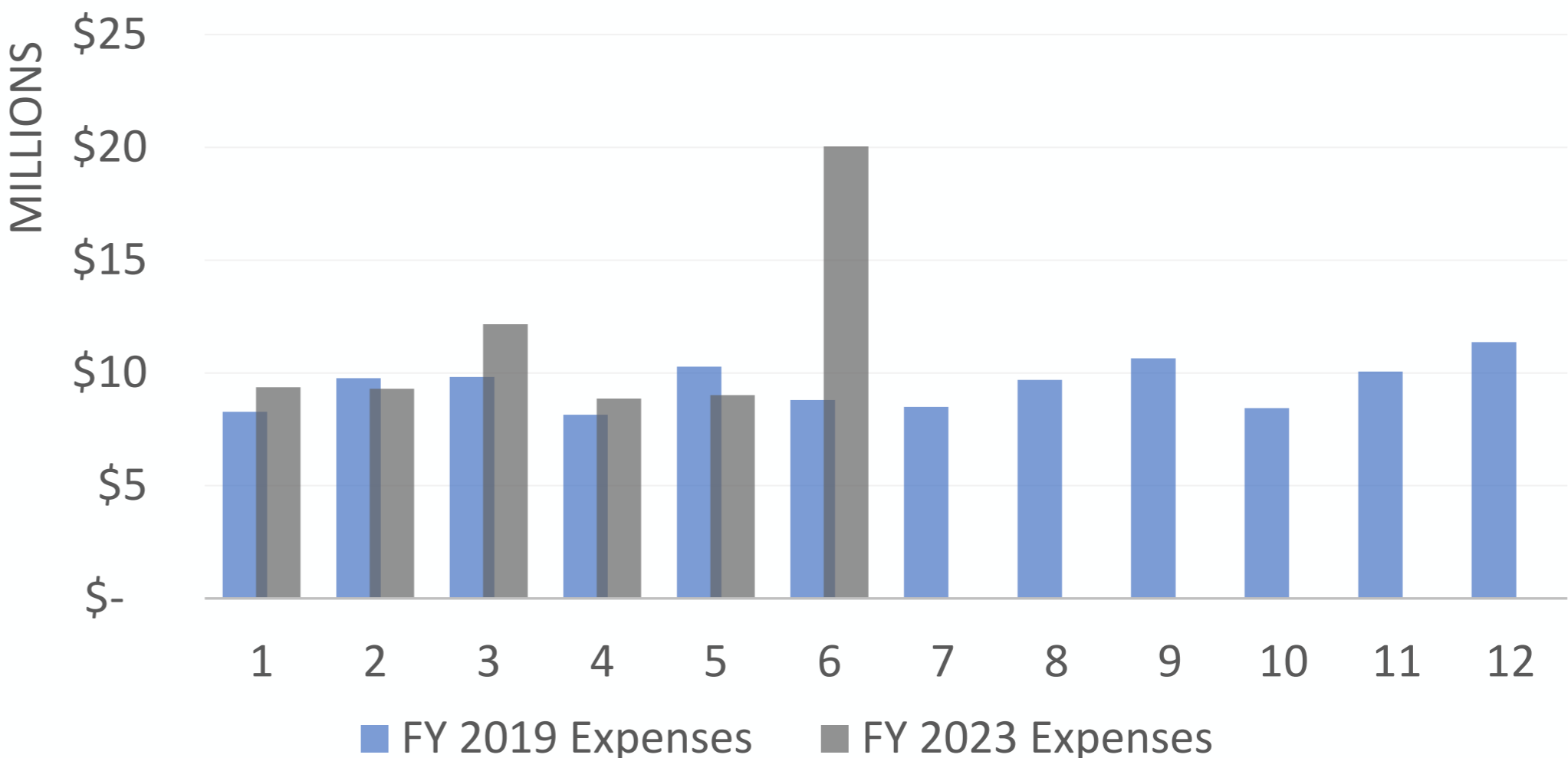


CUMULATIVE PERFORMANCE DETAIL

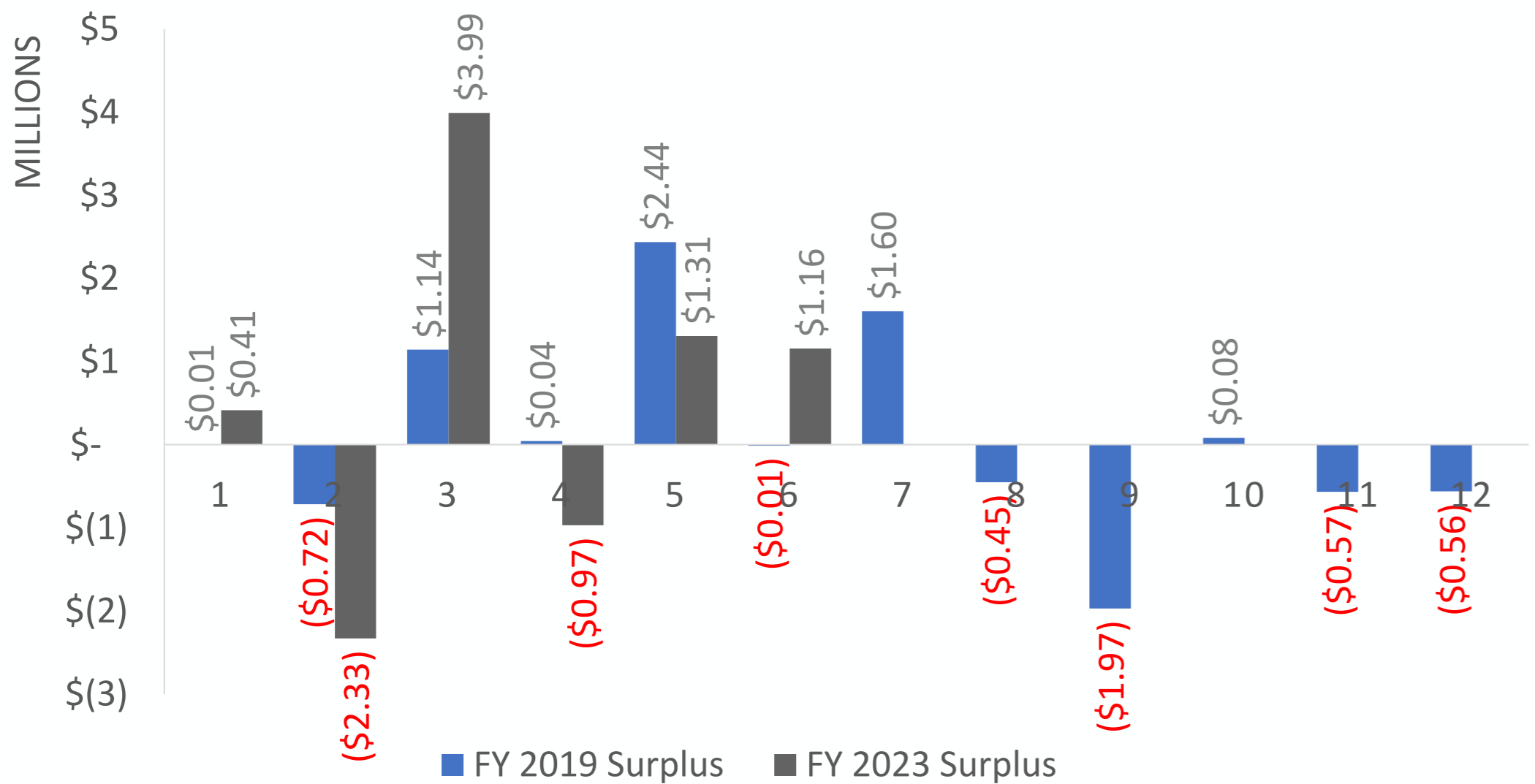
MONTHLY REVENUES



MONTHLY EXPENSES



MONTHLY SURPLUS/(DEFICIT)



MONTHLY RIDERSHIP

